

Photometric Report

CATALOG NUMBER: ECH-EC-40W

Monday, October 12, 2009

FILENAME: ECH-EC-40W.IES

ECH-EC-40W
IESNA:LM-63-2001
[MANUFAC] FULL SPECTRUM SOLUTIONS - JACKSON, MI, USA
[LUMINAIRE] 40W COBRA HEAD STREET
[LUMCAT] ECH-EC-40W
[LAMP] 1; 40W INDUCTION
[LAMPCAT] INDUCTION
[OTHER] HOUSING: CAST BALLAST HOUSING GLASS LENS
[MORE] REFL: ANODIZED ALUM
[MORE] LENS: TEMPERED GLASS

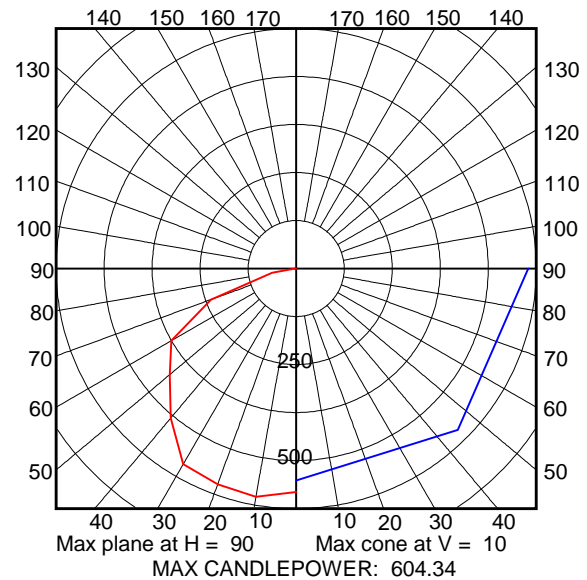
SUMMARY DATA

EFFICIENCY (Total): 56.1 %
EFFICIENCY (Down / Up): 56.0 % / 0.1 %
EFFICIENCY (Street / House): 28.0 % / 28.0 %
ROADWAY CLASSIFICATION: TYPE II, VERY SHORT
CUTOFF CLASSIFICATION: CUTOFF
LUMENS/LAMP: 3350
NO. OF LAMPS: 1
LUMINOUS OPENING: RECTANGULAR
Width: 0.00 (Feet)
Length: 0.00
Height: 0.00
INPUT WATTS: 44

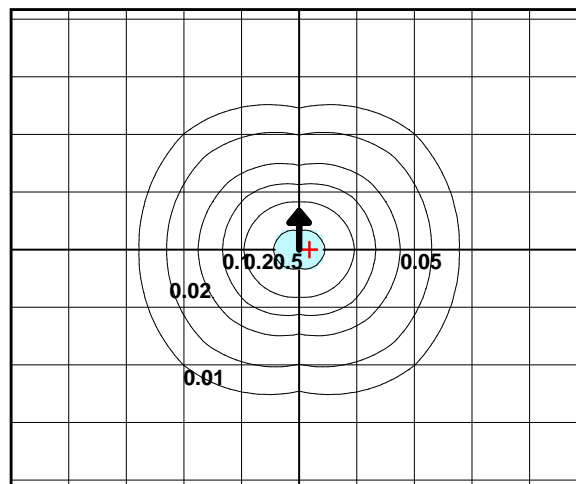
LUMINAIRE CLASSIFICATION SYSTEM (BUG RATING = B1-U1-G1)

FORWARD LIGHT	Lumens (% of Lamp Lumens)	
FL (0-30):	236	(7.0%)
FM (30-60):	470	(14.0%)
FH (60-80):	213	(6.3%)
FVH(80-90):	21	(0.6%)
BACKLIGHT		
BL (0-30):	236	(7.0%)
BM (30-60):	470	(14.0%)
BH (60-80):	213	(6.3%)
BVH(80-90):	21	(0.6%)
UPLIGHT		
UL (90-100):	2	(0.1%)
UH (100-180):	0	(0.0%)
TRAPPED LIGHT:	1468	(43.8%)

PLANE & CONE DIAGRAM



ISO-ILLUMINANCE DIAGRAM (fc)



Mounting Height	Multiplier
10	9.000
15	4.000
20	2.250
25	1.440
30	1.000
35	0.735
40	0.563
45	0.444
50	0.360

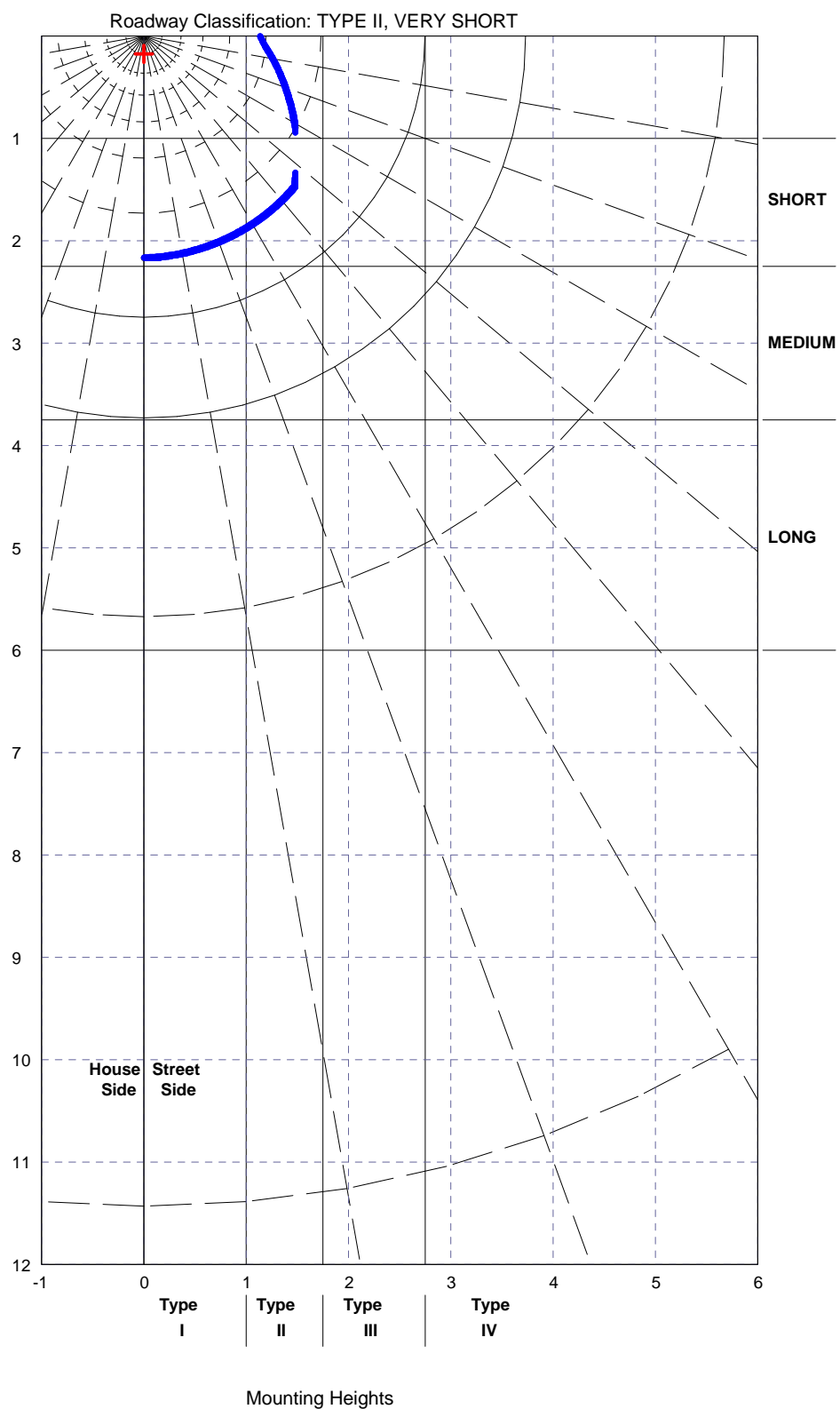
Shade Limit:
0.5 fc.

Shaded Area:
459 sq.ft.

+ = Point of max candela

Reported data calculated from manufacturer's data file, based on IESNA recommended methods.

Photometric Viewer v3.4



Reported data calculated from manufacturer's data file, based on IESNA recommended methods.

Photometric Report

CATALOG NUMBER: ECH-EC-40W

Monday, October 12, 2009

FILENAME: ECH-EC-40W.IES

CANDELA TABLE

Vertical Angle	Horizontal Angles		
	0	45	90
0	582	582	582
10	552	595	604
20	514	574	598
30	481	523	589
40	388	442	509
50	289	411	431
60	220	338	375
70	153	255	236
80	66	79	64
90	6	4	3
100	0	0	0
110	0	0	0
120	0	0	0
130	0	0	0
140	0	0	0
150	0	0	0
160	0	0	0
170	0	0	0
180	0	0	0

Reported data calculated from manufacturer's data file, based on IESNA recommended methods.

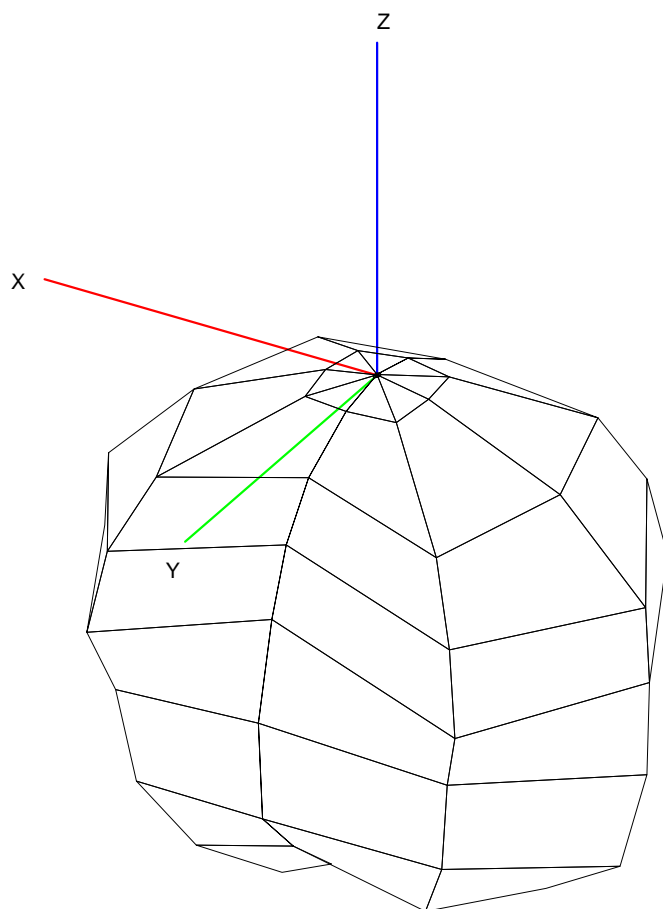
Photometric Viewer v3.4

Photometric Report

CATALOG NUMBER: ECH-EC-40W

Monday, October 12, 2009

FILENAME: ECH-EC-40W.IES



Reported data calculated from manufacturer's data file, based on IESNA recommended methods.

Photometric Viewer v3.4